

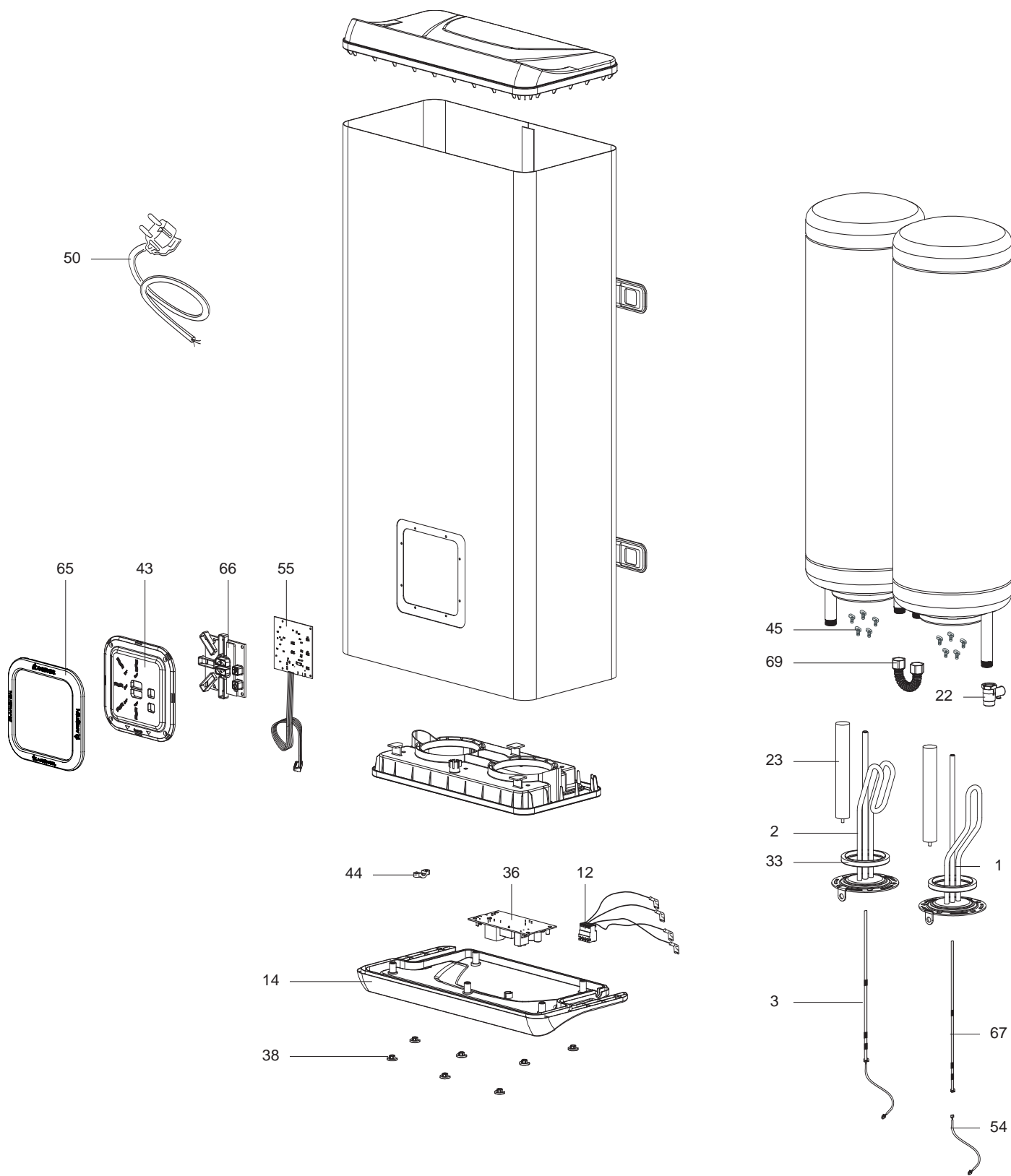
SPARE PARTS EXPLODED VIEW
STORAGE ELECTRIC WATER HEATERS
Model
VLS

R8216599-01EN - Edition 01 - 08/07/2010

VLS

Storage Electric Water Heaters

360 5216		VLS 50
360 5217		VLS 80
360 5218		VLS 100
Reference	Ind.	Model type	Begin	End



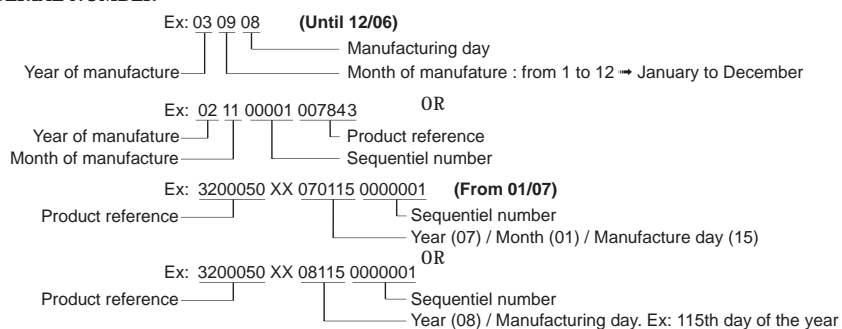
VLS

LIST OF THE ABBREVIATIONS

HW	: Hot water.
CW	: Cold water.
C	: Ceramic resistance (normal heating).
Ca	: Ceramic resistance (accelerated heating)
TP	: Immersion heater.
1F	: With fittings.
2F	: Without fittings.
3F	: With fittings and another outlet connection.
AMI	: With mixing valve.
SMI	: Without mixing valve.
PUISS	: Power of th appliance.
PN	: Appliance with normal pression.
LP	: Appliance with low pression.
PV	: Appliance with variable power.
PF	: Appliance with fixed power..

IDENTIFICATION PLATE

SERIAL NUMBER



The indications mentionned on the prices, commercial or technical literature and the scheme are written for your guidance and are available at a given time. The CONSTRUCTOR retains the power to modify the presentation, the form, the size, the conception or the material of the products.